



## Lentin Plus 1000

### Special Features

- Ancient spices Rice Bran extract with shiitake mushrooms enzyme technology
- Scientifically proven with increase Natural Killer cells and white blood cells (Lymphocytes)activities

### Most Suitable for

- Cancer Support & Alternative Therapy
- Ulcers or Tumor
- Shingles
- Various Autoimmune (allergies)
- Heaty Inflammatory Physics

### Main Benefits

- Enhance immune cell (T cell, B cell and NK cell) activity
- Anti-tumor or ulcer with improved immunity
- Improve intestinal absorption
- Anti-oxidation
- Anti-virus
- Reduce side effects of chemotherapy and radiation therapy

### Ingredients/Process

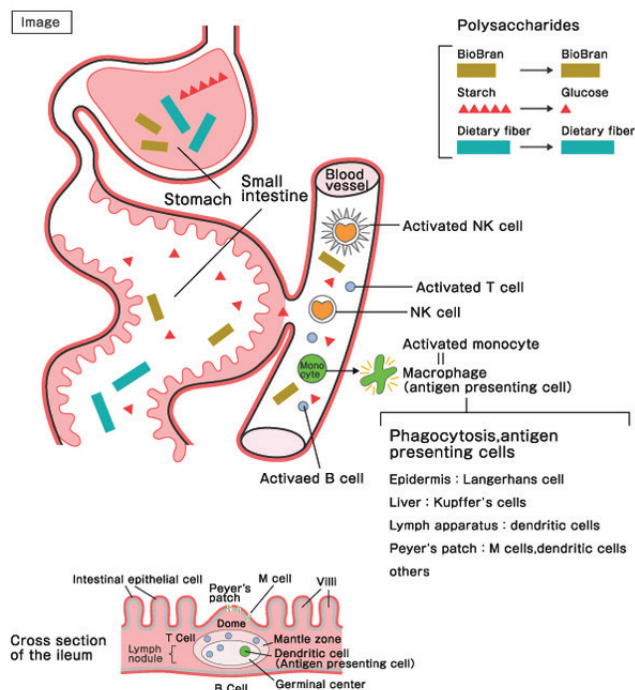
- Ancient spices Rice Bran extract with shiitake mushrooms enzyme technology – Daiwa Pharmaceutical Co.Ltd, Japan

# Lentin Plus 1000 (Silver Grade or MGN-4)

LENTIN PLUS 1000 is a natural food product which contains rice bran arabinosyloxylan derivative (BioBran). It is produced by treating a hot water extract of rice bran containing mainly water-soluble dietary fiber (hemicellulose B) with an enzyme derived from Shiitake mushroom extract. This process reduces the molecular weight of the arabinosyloxylan, facilitating its absorption into the body. In view of its lower molecular weight than naturally occurring arabinosyloxylan, the BioBran in LENTIN PLUS 1000 can be partially absorbed directly into the blood from the small intestine to interact with immune cells.

## Mechanism of Action

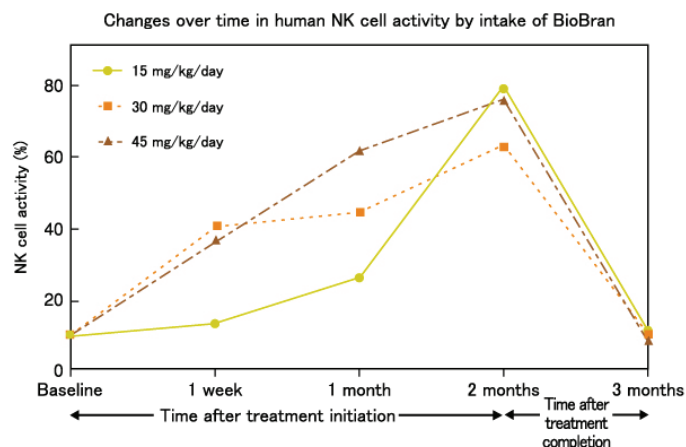
Starch, dietary fiber, and BioBran in LENTIN PLUS 1000 are classified as polysaccharides. Starch is digested by saliva, pancreatic juice, and intestinal juice, and is absorbed in the small intestine as glucose. Dietary fiber is not digested, and is excreted unchanged. As for the BioBran in LENTIN PLUS 1000, due to its lower molecular weight than naturally occurring arabinosyloxylan, it is known to be partly absorbed directly in the digestive tract, entering the blood stream. In short, it does not have to be broken down in the digestive process but can be partially absorbed directly into the blood from the small intestine to interact with immune cells. It activates the Natural Killer Cells, T cells, B cells, and macrophages, either directly in the blood, or indirectly via the Peyer's patch of the ileum. BioBran plays an important role in immunomodulation (immunostimulation, anti-inflammation, anti-allergy, antioxidation processes). Overall, it is considered to enhance the body's natural healing abilities, alleviate the adverse drug reactions of chemotherapeutic agents, and improve quality of life.



Ghoneum M., Drew Univ., "Enhancement of human natural killer cell activity by modified arabinosyloxylan from rice bran, INT.J.IMMUNOTHERPY XIV(2) pp.89-99, 1998

## Scientific Test

It has been scientifically shown that it effectively strengthens the immune system response by increasing the activities of white blood cells. Below graph from the laboratory studies presents the relationship between intake of LENTIN PLUS 1000 and the resultant human health immune response. After taking Lentin Plus 1000 for 1 week to 2 months, NK cell has increased significantly. NK cell activity decreased to the baseline level 1 month after discontinuation of ingestion.



NK cell plays a major role in the host-rejection of both tumours and virally infected cells. It is the immune system's first line of defense. That is how LENTIN PLUS 1000 could help to boost the body's natural defenses to fight the cancer.

It is a safe and natural product which has no known side effects. It is highly valued in many countries including America, Europe and Asia.